



SB 15, 25, 35G SERIES

High Current 15, 25, 35 AMPS. Single Phase Glass Passivated Bridge Rectifiers

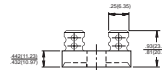
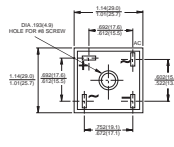


Voltage Range
50 to 1000 Volts
Current
15.0/25.0/35.0 Amperes

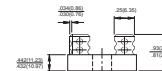
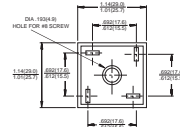
Features

- ✧ UL Recognized File # E-96005
- ✧ Metal case with an electrically isolated epoxy
- ✧ Rating to 1,000V PRV.
- ✧ High efficiency
- ✧ Mounting: thru hole for #8 screw
- ✧ High temperature soldering guaranteed: 260°C / 10 seconds at 5 lbs., (2.3 kg) tension
- ✧ Leads solderable per MIL-STD-202 Method 208
- ✧ Isolated voltage from case to lead over 2000 volts

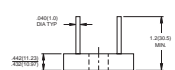
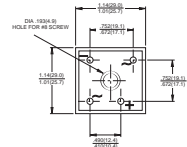
SB35



SB35-M



SB35-W



Dimensions in inches and (millimeters)

Maximum Ratings and Electrical Characteristics

Rating at 25°C ambient temperature unless otherwise specified.

Single phase, half wave, 60 Hz, resistive or inductive load.

For capacitive load, derate current by 20%

Type Number	Symbol	-05	-1	-2	-4	-6	-8	-10	Units
Maximum Recurrent Peak Reverse Voltage	V_{RRM}	50	100	200	400	600	800	1000	V
Maximum RMS Voltage	V_{RMS}	35	70	140	280	420	560	700	V
Maximum DC Blocking Voltage	V_{DC}	50	100	200	400	600	800	1000	V
Maximum Average Forward Rectified Current @ $T_C = 55^\circ C$	$I_{(AV)}$	15.0	25.0	35.0					A
Peak Forward Surge Current, Single Sine-wave Superimposed on Rated Load (JEDEC method)	I_{FSM}	300	300	400					A
Maximum Instantaneous Forward Voltage Drop Per Element at Specified Current	V_F	7.5A	12.5A	17.5A	1.1				V
Maximum DC Reverse Current at Rated DC Blocking Voltage Per Element	I_R				10				μA
Typical Thermal Resistance (Note 1)	$R_{\theta JC}$				2.0				$^\circ C/W$
Operating and Storage Temperature Range	T_J, T_{STG}				-50 to +150				$^\circ C$

Notes: 1. Thermal Resistance from Junction to Case.

2. Suffix "W" - Wire Lead Structure/"M" - Terminal Location Face to Face.



SB1505G SB1510G
 RATINGS AND CHARACTERISTIC CURVES (SB2505G THRU SB2510G)
 SB3505G SB3510G

FIG.1- MAXIMUM FORWARD CURRENT DERATING CURVE

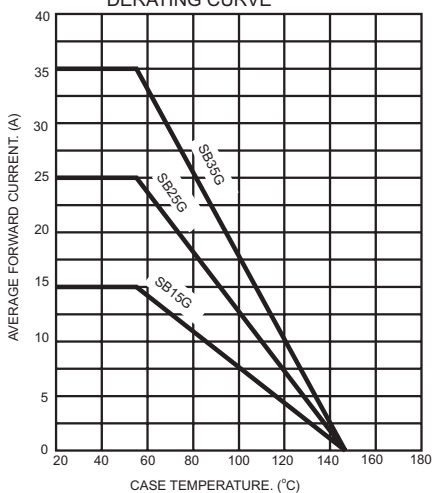


FIG.2- MAXIMUM NON-REPETITIVE FORWARD SURGE CURRENT PER BRIDGE ELEMENT

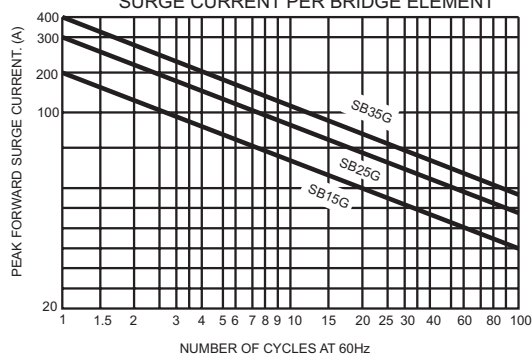


FIG.3- TYPICAL REVERSE CHARACTERISTICS PER BRIDGE ELEMENT

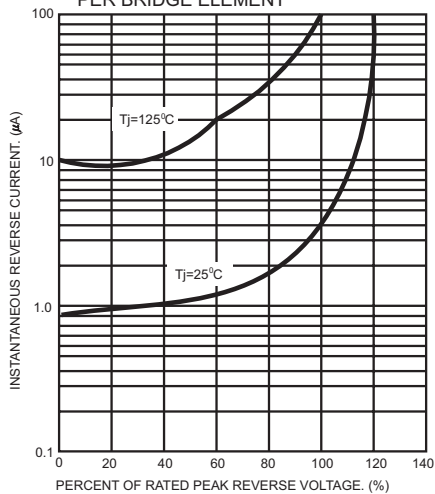


FIG.4- TYPICAL FORWARD CHARACTERISTICS

